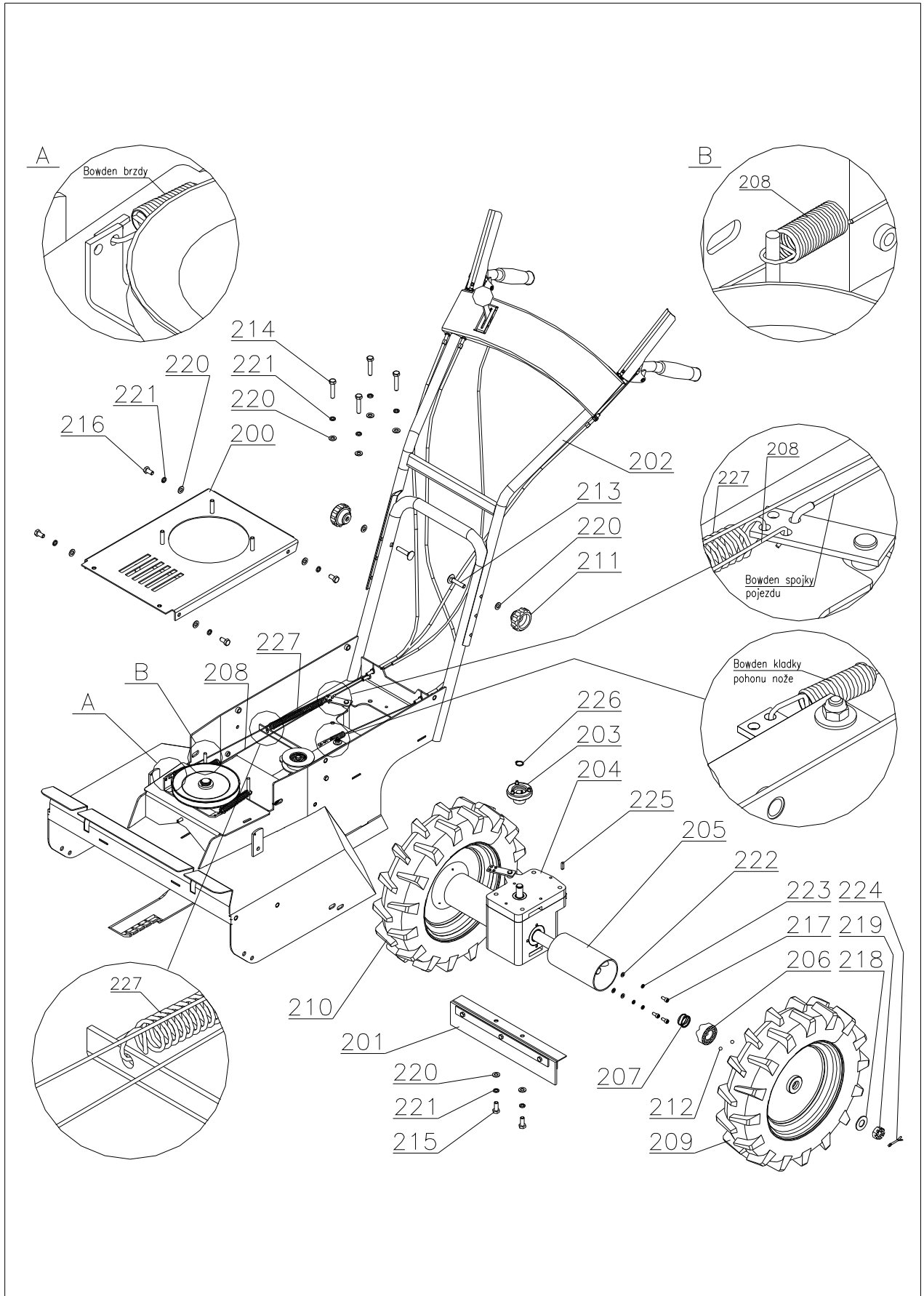


<b>Blade drive</b>					
<b>Pos.</b>	<b>Part name</b>	<b>Dimensions</b>	<b>Drawing - Standard</b>	<b>Ord. No.</b>	<b>Pcs</b>
100	Chassis of mulcher F-530	weldment	22 9 1536 060	184 111	1
101					
102	Brake shoe		22 9 1664 024	189 014	2
103	Driven pulley		22 9 3325 012	189 004	1
104	Pulley assembly		separate part list		1
105	Brake toggle	BDR-595	22 9 8032 048	196 003	1
106	Blade shaft		32 0 3822 027	184 112	1
107	Blade holder		32 0 8021 004	184 113	1
108					
109					
110	Shim	42x36x0,1	32 0 9220 024	110 012	3
111	Shim	30,5x20,2x0,3	32 0 9220 058	127 041	6
112	Cover		32 1 9220 126	127 014	1
113	Brake shoe spring		632 0 9746 044	189 511	1
114	Blade Hi-Lift GATOR	53,3 cm		180 500	1
115	Bearing	6004 2RS		9943158	2
116	Spring	TZ 1.8x16.2x63x20		169 514	1
117	Spring	T 080.088.0632		184 553	1
118					
119	Cap VINYL FLEX	6x20 black		184 528	1
120					
121	Bolt	M10x1x25	ČSN EN28676	137 501	1
122					
123	Bolt	M6x45	ČSN 02 1103.25	195 523	1
124					
125	Bolt	M6x10	BN 3326	184 529	1
126					
127					
128	Nut	M6	ČSN 02 1492.25	168 516	4
129	Washer	21	ČSN 02 1702.15	124 530	1
130					
131	Washer	10,2	ČSN 02 1740.05	106 530	1
132					
133					
134					
135	Washer	6,1	ČSN 02 1740.05	6510920	1
136	Key	5e7x5x32	ČSN 02 2562	184 527	1
137	Retaining ring	42	ČSN 02 2931	136 506	1
138	Retaining ring	20	ČSN 02 2930	110 515	3
139					
140	Safety washer	8	BN13194	184 614	1
141	Pin of pulley arm		32 0 9311 180	184 092	1
142	Key		32 0 3330 044	184 114	1
143	Nut	M10	ČSN 02 1492.25	195 527	
144	Washer	10,5	ČSN 02 1702.15	189 567	2
145	Washer	6,6	ČSN 02 1729.05	195 530	1
146	Pad	069-034 14x3/8		182 534	2
147	Bolt	M10x25	ČSN 02 1103.55	184 568	2
148	Nut	M10	ČSN 02 1492.25	195 527	2
149	Washer	10,5	ČSN 02 1702.05	189 567	2



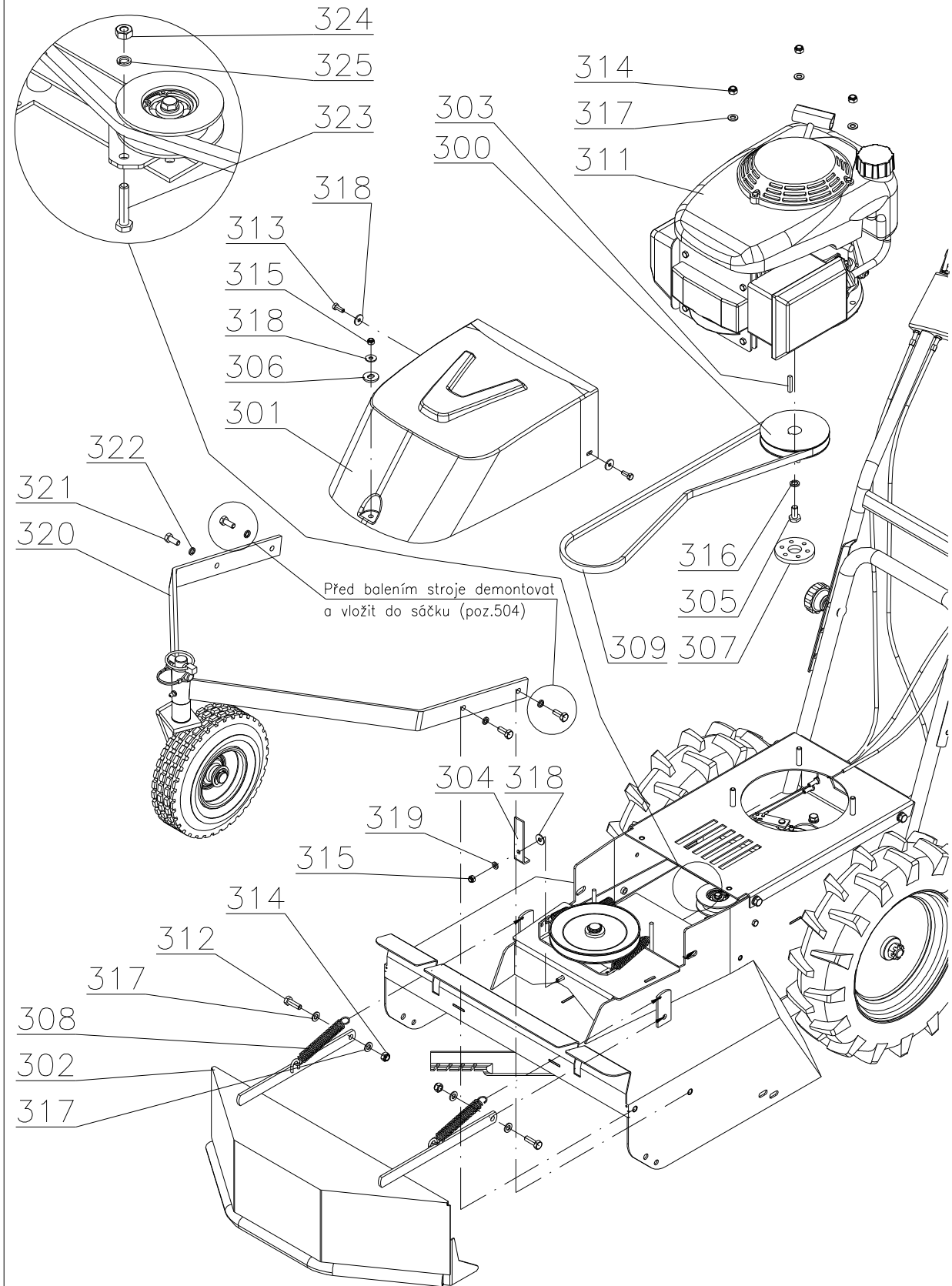
<b>Wheel drive</b>					
<b>Pos.</b>	<b>Part name</b>	<b>Dimensions</b>	<b>Drawing - Standard</b>	<b>Ord. No.</b>	<b>Pcs</b>
200	Engine plate		22 9 8032 050	196 008	1
201	Riveted mudflap		22 9 8534 010	196 059	1
202	Handlebars assembly		separate part list		1
203	Driven part of clutch		32 0 3625 029B	196 045	1
204	Gearbox F-530	assembly	622 9 3282 056	184 530	1
205	Wheel cuff	black	632 0 1642 008	189 507	2
206	Freewheel		632 0 8021 026	196 509	2
207	Spring		632 0 9746 046 Z	189 512	2
208	Wheel clutch spring		632 0 9746 056	196 518	1
209	Left wheel VDZ	3.5-8 4PR	-	see note	1
210	Right wheel VDZ	3.5-8 4PR	-	see note	1
211	Plastic rosette	M 8-D.50 'JJV'	-	189 521	2
212	Ball	Diam. 7.144	-	189 575	4
213	Bolt	M8x50	ČSN 02 1319.25	189 593	2
214	Bolt	M8x40	ČSN 02 1103.25	196 503	4
215	Bolt	M8x20	ČSN 02 1103.25	189 548	4
216	Bolt	M8x16	ČSN 02 1103.25	106 547	4
217	Bolt	M5x12	ČSN 02 1143.50	189 580	6
218	Nut	M16x1,5	ČSN 02 1412.25	189 560	2
219	Washer	17	ČSN 02 1702.15	189 566	2
220	Washer	8,4	ČSN 02 1702.25	131 517	12
221	Washer	8,2	ČSN 02 1740.05	104 574	10
222	Washer	5,3	ČSN 02 1702.15	189 581	6
223	Washer	5,1	ČSN 02 1740.05	127 512	6
224	Split pin	4x32	ČSN 02 1781.05	189 577	2
225	Key	4e7x4x18	ČSN 02 2562	196 508	1
226	Retaining ring	14	ČSN 02 2930	110 513	1
227	Spring	TZ 200.140.1420		184 632	1

Note:

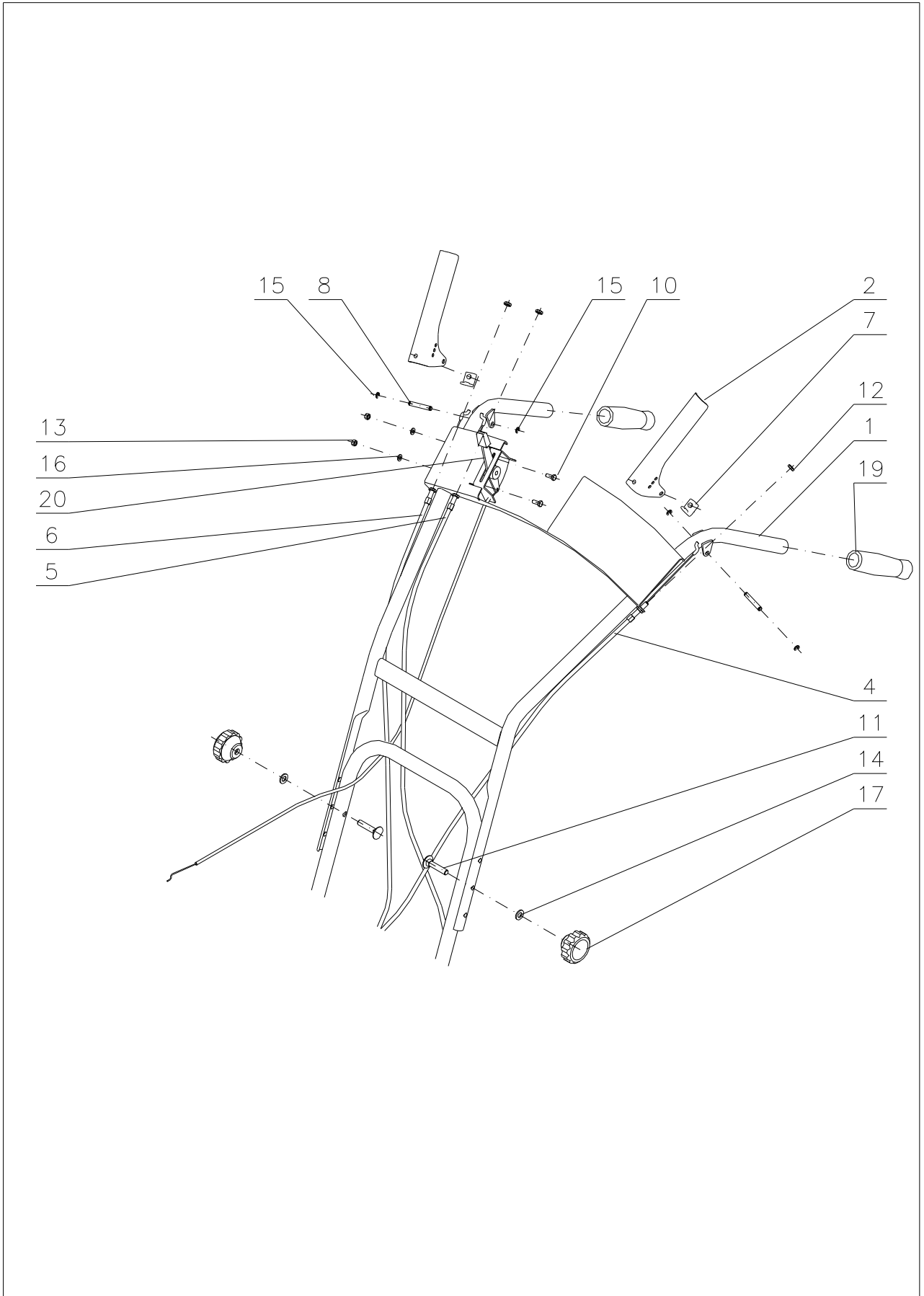
Positions 209 and 210 are supplied with pressed-on balls (pos. 212) only, see the positions below:

<b>Pos.</b>	<b>Part name</b>	<b>Dimensions</b>	<b>Drawing - Standard</b>	<b>Ord. No.</b>	<b>Pcs</b>
-	Left wheel VDZ assembly		22 1 1770 022A	184 119	1
-	Right wheel VDZ assembly		22 1 1770 023A	184 120	1

Pos. 323, 324 and 325 to be mounted after the V-belt (pos. 309) is put on



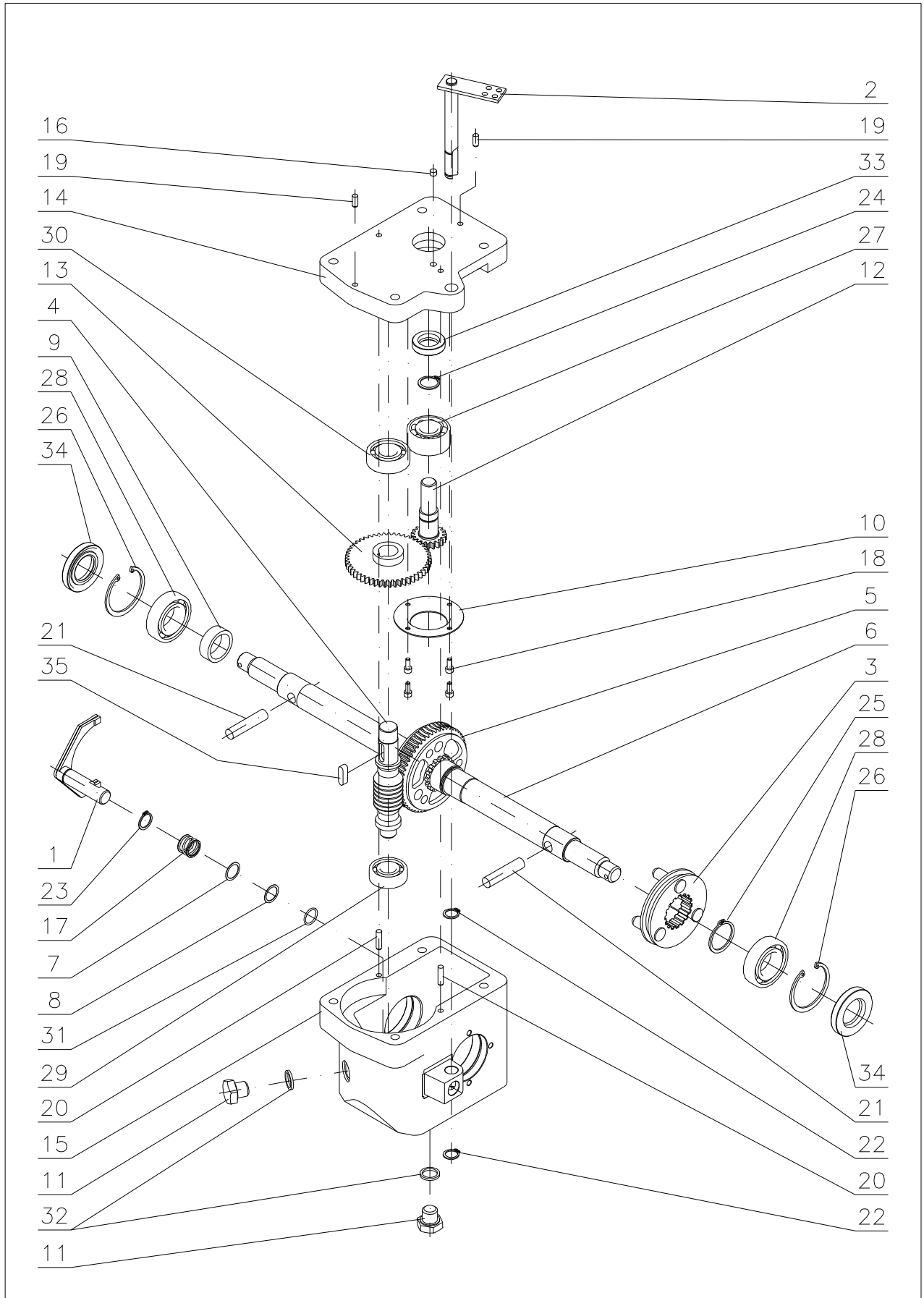
<b>Engine and covers</b>					
<b>Pos.</b>	<b>Part name</b>	<b>Dimensions</b>	<b>Drawing - Standard</b>	<b>Ord. No.</b>	<b>Pcs</b>
300	Driving pulley	diam. 106 dw assembly	22 9 3325 034	184 022	1
301	Mulcher V-belt cover	assembly	22 9 8545 039	184 020	1
302	Front cover weldment		22 9 8549 012	182 030	1
303	Key	3/16"	32 0 3330 021	189 036	1
304	Front V-belt guide		32 0 3340 007	184 056	1
305	Bolt	W 3/8"	32 0 9016 057	105 011	1
306	Rubber washer		32 0 9220 230	189 105	1
307	Rubber part of clutch	BDR-595	632 0 9220 231	196 545	1
308	Spring	TZ 1.8x16.2x63x20	-	169 514	2
309	V-belt	X13 x 1335 Ld 6T6K	-	184 608	1
310					
311	Engine HONDA GCV160	E-N2-E8-OH	-	171 535	1
312	Bolt	M8x25	ČSN 02 1103.25	110 525	2
313	Bolt	M6x16	ČSN 02 1103.25	189 552	2
314	Nut	M8	ČSN 02 1492.25	104 622	5
315	Nut	M6	ČSN 02 1492.25	169 516	2
316	Washer	10,2	ČSN 02 1740.05	106 530	1
317	Washer	8,4	ČSN 02 1702.15	131 517	7
318	Washer	6,6	ČSN 02 1727.05	169 508	4
319	Washer	6,4	ČSN 02 1702.15	189 571	1
320	Leading wheel		separate part list		
321	Bolt	M8x20	ČSN 02 1103.25	189 548	4
322	Washer	8,2	ČSN 02 1740.05	104 574	4
323	Bolt	M6x30	ČSN 02 1103.25	184 552	1
324	Nut	M6	ČSN 02 1401.25	1800141	1
325	Washer	6,1	ČSN 02 1740.05	6510920	1



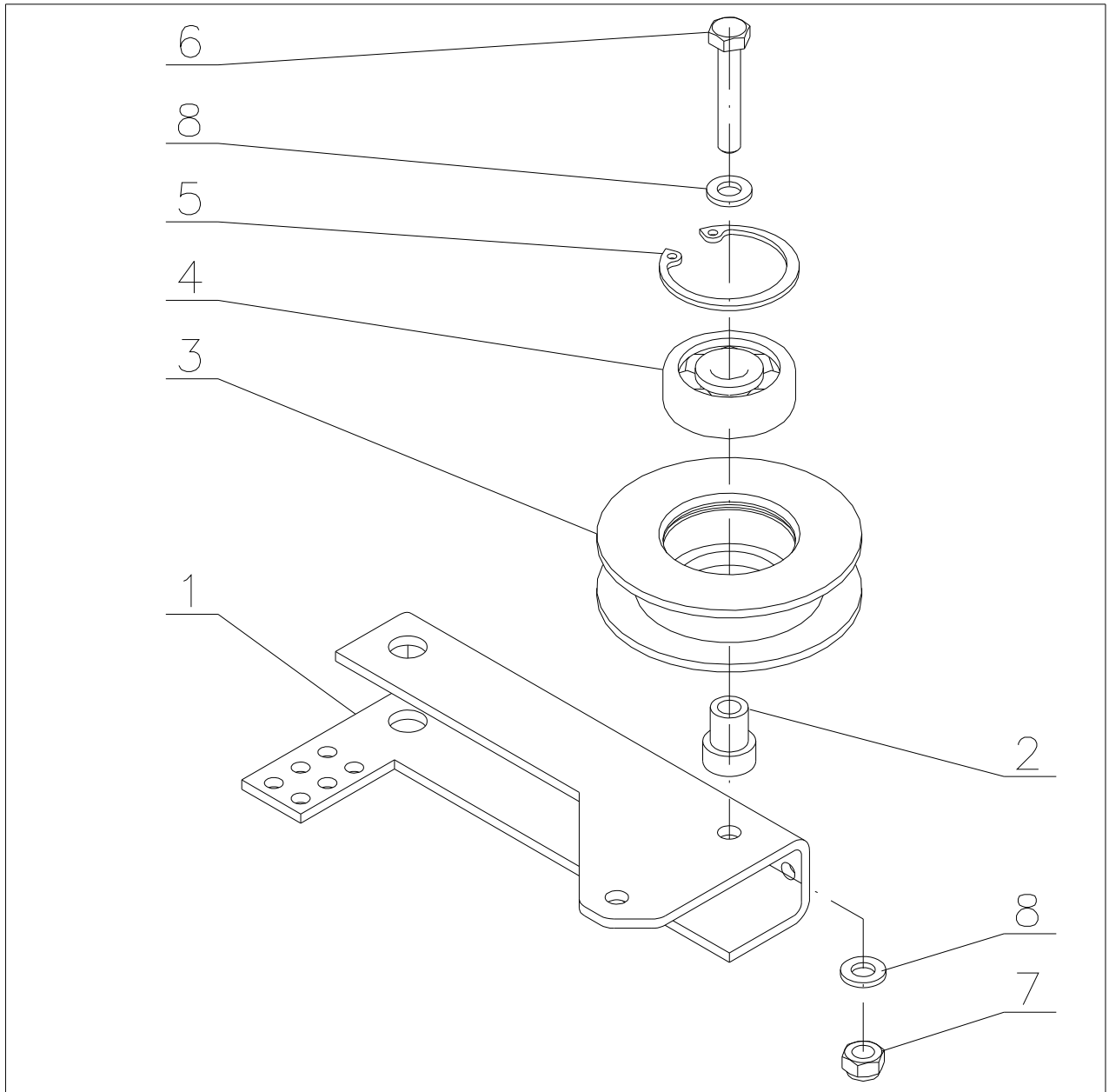
<b>Handlebars</b>					
<b>Pos.</b>	<b>Part name</b>	<b>Dimensions</b>	<b>Drawing - Standard</b>	<b>Ord. No.</b>	<b>Pcs</b>
1	Welded handlebars		22 9 8078 059	196 002	1
2	Control lever		32 0 8058 009	196 013	2
3					
4	Bowden cable of clutch		622 9 8074 044	196 515	1
5	Bowden cable of roller		622 9 8074 045	196 516	1
6	Bowden cable of brake		622 9 8074 046	196 517	1
7	Lever stop		632 0 8065 002	196 519	2
8	Lever pin		632 0 9311 157	196 520	2
9					
10	Bolt	M5x10	ČSN 02 1103.25	195 525	2
11	Bolt	M8x50	ČSN 02 1319.25	189 593	2
12	Nut	M6	ČSN 02 1401.25	1800141	3
13	Nut	M5	ČSN 02 1492.25	105 518	2
14	Washer	8,4	ČSN 02 1702.15	131 517	2
15	Yoke ring	4	ČSN 02 2929.05	189 576	4
16	Washer	5,3	ČSN 02 1702.15	189 581	2
17	Plastic rosette	M 8-diam. 50 „JJW“	EUROPLAST	189 521	2
18					
19	Rubber handle	ART 773 black		195 518	2
20	Accelerator lever	1AT09007, L900	START	196 548	1
21	Red knob	1AC02040 1AE00300	START	184 519	1

Note: Pos. 21 is not shown in the picture, it is put on the lever Pos. 20

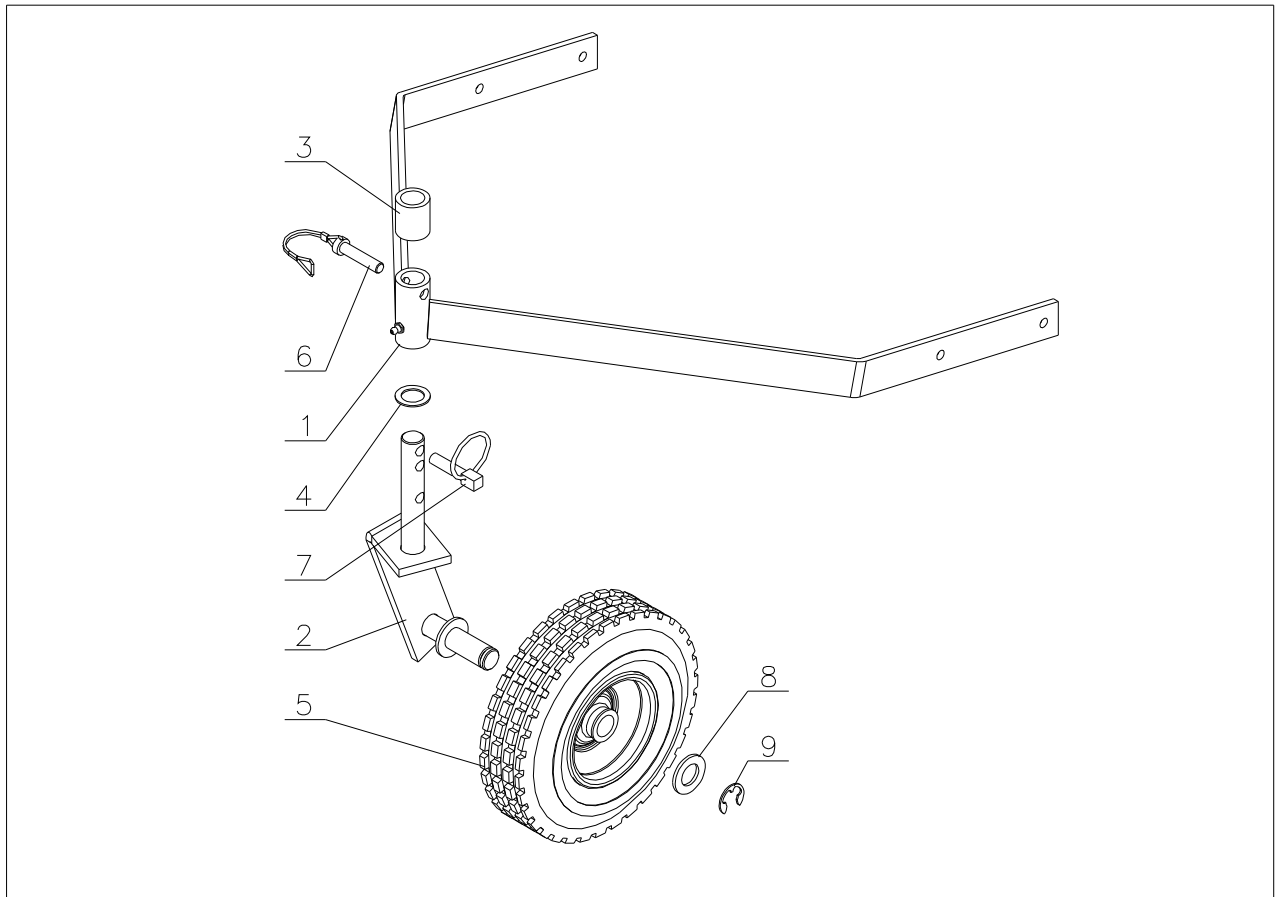




<b>Gearbox</b>					
<b>Pos.</b>	<b>Part name</b>	<b>Dimensions</b>	<b>Drawing - Standard</b>	<b>Ord. No.</b>	<b>Pcs</b>
1	Fork weldment		22 1 3330 013A	189 078	1
2	Lever assembly		22 9 3330 017	196 022	1
3	Driving disc assembly		22 9 3616 006	189 029	1
4	Worm	2:54	32 0 3214 028	196 023	1
5	Worm wheel		32 0 3221 016	196 027	1
6	Shaft - Wheel axle		32 0 3814 008	189 028	1
7	Shim	20/14,2/0,2	32 0 9220 115	127 027	1
8	Shim	20/14,2/0,3	32 0 9220 114	127 026	1
9	Spacer ring 10,7		32 0 9220 195	189 032	1
10	Cup		32 0 9220 197	196 032	1
11	Plug		32 1 9016 036	106 050	2
12	Pinion 14 teeth		632 0 3014 011	196 541	1
13	Gear 56 teeth		632 0 3021 029	196 540	1
14	Cover		632 0 3253 044	196 511	1
15	Box		632 0 3253 045	196 510	1
16	Felt		632 0 9520 045	189 528	1
17	Spring		632 0 9746 047	189 527	1
18	Bolt	M4x10	ČSN 02 1143.50	196 521	4
19					
20	Pin	5x20	ČSN 02 2150	189 556	2
21	Pin	10x45	ČSN 02 2150	2010260	2
22	Retaining ring	12	ČSN 02 2930	6021502	2
23	Retaining ring	14	ČSN 02 2930	110 513	1
24	Retaining ring	17	ČSN 02 2930	110 514	1
25	Retaining ring	28	ČSN 02 2930	189 553	1
26	Retaining ring	47	ČSN 02 2931	126 504	2
27	Bearing	3203	ČSN 02 4630	196 533	1
28	Bearing	6005	ČSN 02 4630	129 535	2
29	Bearing	6202	ČSN 02 4630	9943131	1
30	Bearing	6203	ČSN 02 4630	106 507	1
31	Ring	18x14	ČSN 02 9280.2	189 591	1
32	Ring	14x18 AL	ČSN 02 9310.3	106 539	2
33	Gufero sealing	17x30x7	ČSN 02 9401.0	9943223	1
34	Gufero sealing	25x47x7	ČSN 02 9401.0	124 505	2
35	Key	6x6x20	ČSN 022562	196 536	1



<b>Pulley assembly</b>					
<b>Pos.</b>	<b>Part name</b>	<b>Dimensions</b>	<b>Drawing - Standard</b>	<b>Ord. No.</b>	<b>Pcs</b>
1	Pulley arm		32 0 3330 034	196 010	1
2	Pulley bearing shell		32 0 9320 071	196 528	1
3	Pulley		632 0 3325 040	189 586	1
4	Bearing	6300 2RS	ČSN 024630	189 585	1
5	Retaining ring	35	ČSN 02 2931	126 503	1
6	Bolt	M6x30	ČSN 02 1103.25	184 552	1
7	Nut	M6	ČSN 02 1492.25	168 516	1
8	Washer	6,4	ČSN 02 1702.15	189 571	2



<b>Leading wheel</b>					
<b>Pos.</b>	<b>Part name</b>	<b>Dimensions</b>	<b>Drawing - Standard</b>	<b>Ord. No.</b>	<b>Pcs</b>
1	Leading wheel frame	F-530 (2006)	22 9 1646 042	184 116	1
2	Wheel hinge F-530 (2006)		22 9 1646 040	184 117	1
3	Distance ring		32 0 9320 094	184 118	1
4	Sliding washer		32 0 9220 229	182 039	1
5	Wheel	220/20F		184 625	1
6	Cotter pin	AMA art. 2914		182 533	1
7	Pin with ring	160 039		125 500	1
8	Washer	21	ČSN 02 1702.05	124 530	1
9	Stirrup ring	15	ČSN 02 2929.05	184 621	1